

**MUNICIPAL DISTRICT OF PINCHER CREEK NO. 9
BYLAW NO. 1278-17**

Being a bylaw of the Municipal District of Pincher Creek No. 9 in the Province of Alberta, to amend Bylaw No. 1140-08, being the Land Use Bylaw.

WHEREAS Section 639 of the *Municipal Government Act*, Revised Statutes of Alberta 2000, Chapter M-26, as amended, provides that a municipality must pass a Land Use Bylaw;

AND WHEREAS The Municipal District of Pincher Creek No. 9 is in receipt of a request to amend the land use designation of lands legally described as:

SE 22 6-29 W4M;
NE 22 6-29 W4M;
SW 22 6-29 W4M.

And as shown on Schedule 'A' attached hereto, from "Agricultural - A" to "Wind Farm Industrial - WFI";

AND WHEREAS Council feels that the "Wind Farm Industrial - WFI" designation is appropriate for lands proposed for the use of wind farm development;

AND WHEREAS the purpose of the proposed amendment is to allow for Category 3 Wind Energy Conversion System use;

NOW THEREFORE, under the authority and subject to the provisions of the *Municipal Government Act*, Revised Statutes of Alberta 2000, Chapter M-26, as amended, the Council of the Municipal District of Pincher Creek No. 9, in the Province of Alberta, duly assembled does hereby enact the following:

1. This bylaw shall be cited as "Land Use Bylaw Amendment No. 1278-17".
2. Amendments to Land Use Bylaw No. 1140-08 as per "Schedule A" attached.
3. This bylaw shall come into force and effect upon third and final passing thereof.

READ a first time this 13th day of June, 2017.

A PUBLIC HEARING was held this 11th day of July, 2017.

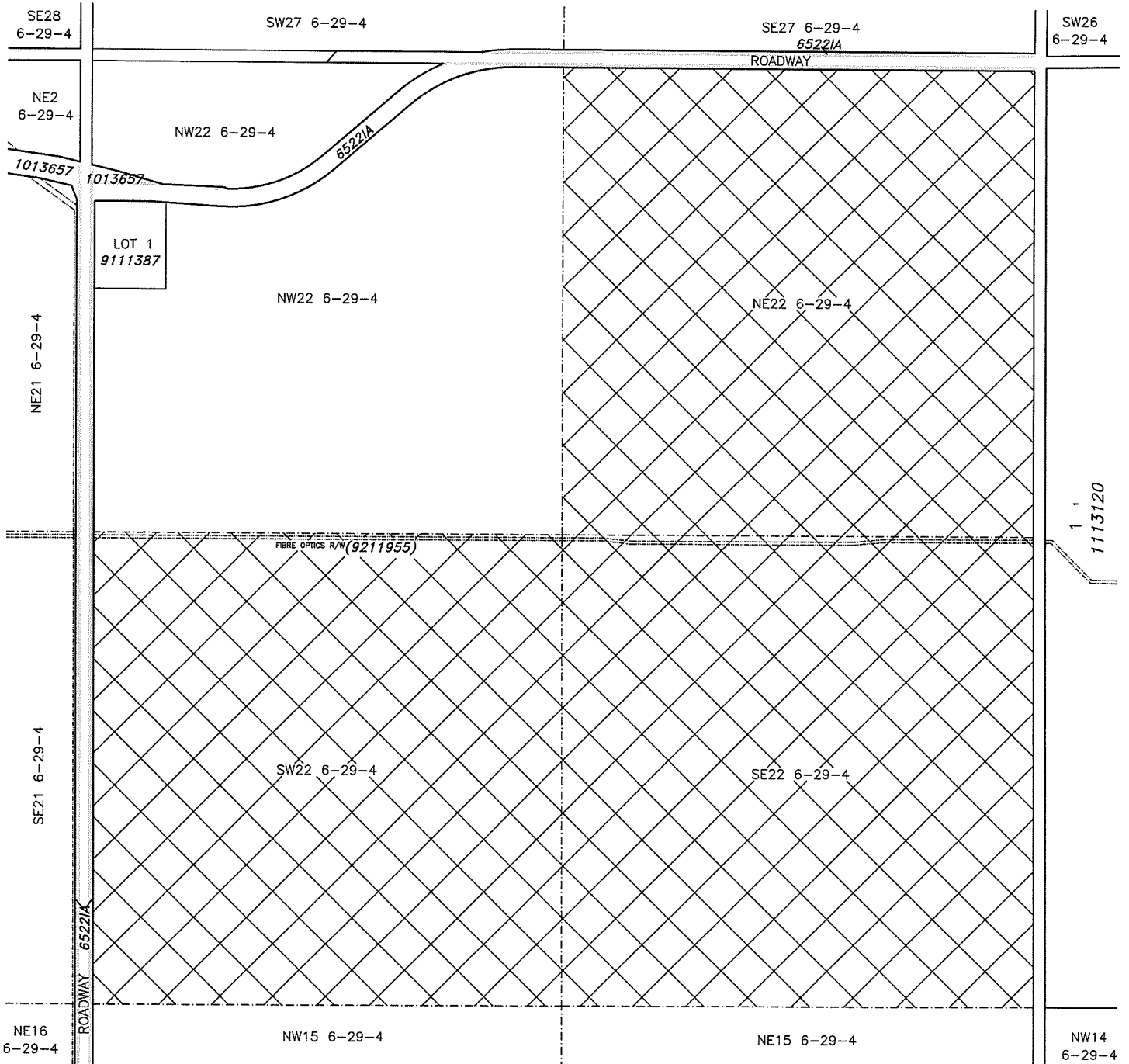
READ a second time this 22nd day of August, 2017.

READ a third time and finally PASSED this 22nd day of August, 2017.


Reeve – Brian Hammond


Chief Administrative Officer - Wendy Kay

Attachment
- "Schedule A"



**LAND USE DISTRICT REDESIGNATION
SCHEDULE 'A'**



FROM: Agriculture 'A'
TO: Wind Farm Industrial 'WFI'

SW, SE & NE 1/4 SEC 22, TWP 6, RGE 29, W 4 M
MUNICIPALITY: MUNICIPAL DISTRICT OF PINCHER CREEK NO. 9
DATE: MAY 18, 2017

Bylaw #: 1278-17
Date: 2017/08/22



MAP PREPARED BY:
OLDMAN RIVER REGIONAL SERVICES COMMISSION
3105 16th AVENUE NORTH, LETHBRIDGE, ALBERTA T1H 5E8
TEL. 403-329-1344

"NOT RESPONSIBLE FOR ERRORS OR OMISSIONS"